

1276

1275

B

2845/6

2346/1

2346/2

2230

2845/20

880-70

2845/8

2845/1

2845/19

268.63

294

294

560-114

2845/25

22.35

34

2845/24

27.95

2896/22

483-29

(14.68)

31

30

(20.12)

812-835

2896/19

Rváčcovská

0.48

915-16

33

23.17

2896/7

2.80

915-17

8.00

35.290

915-7

0.43

0.73

5

2896/11

2326/1

2326/2

2896/13

0.48

7.4

7.43

915-8

2896/12

2054/1

2896/6

2896/17

2054/2

2896/18

766

○

2930/1

→

2931/5

2926

2923/8

11

1277

2520

2642/5

2642/2

2642/6

2642/3

3331/2

880-74

812-832

2642/19

2642/18

2896/21

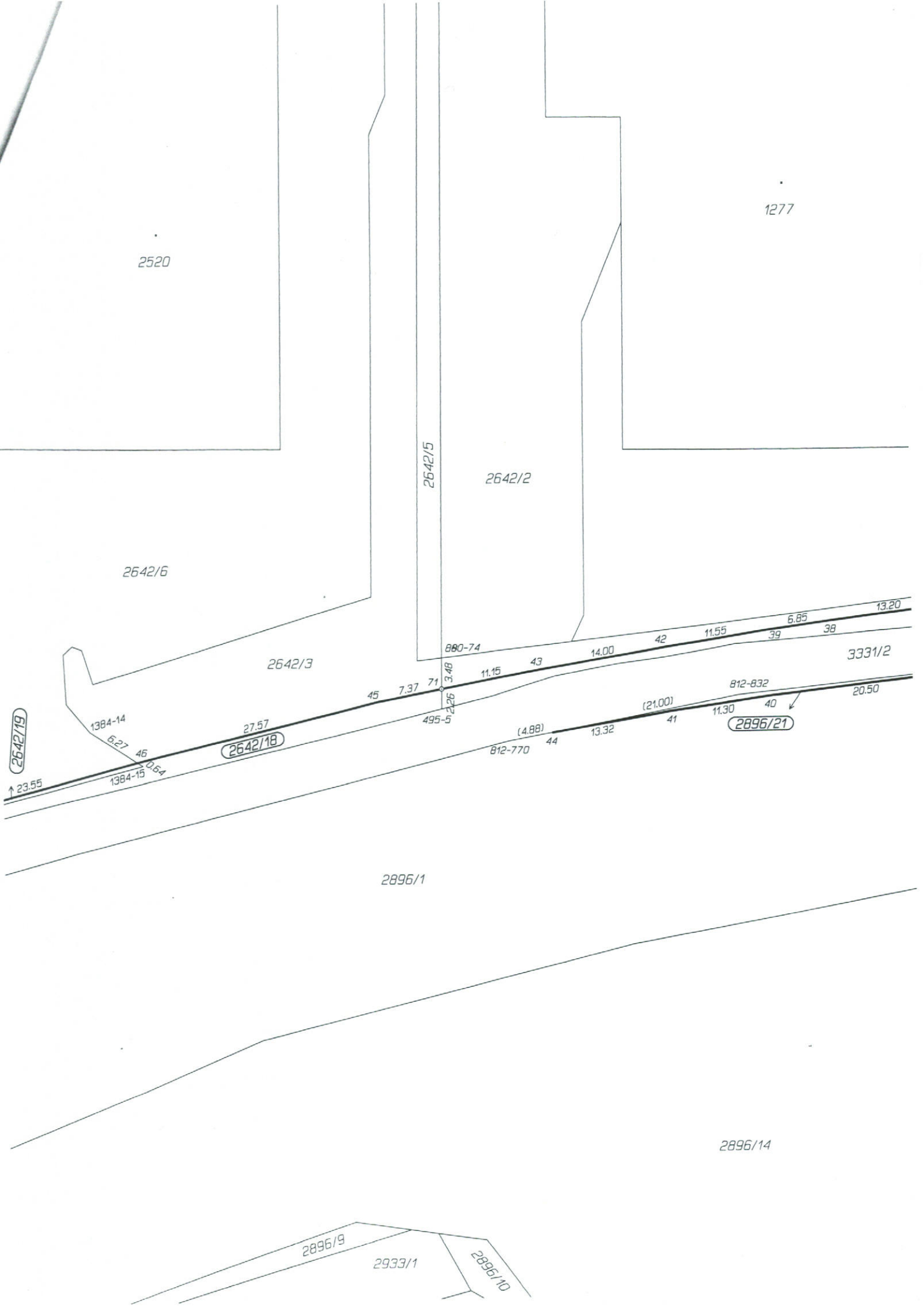
2896/1

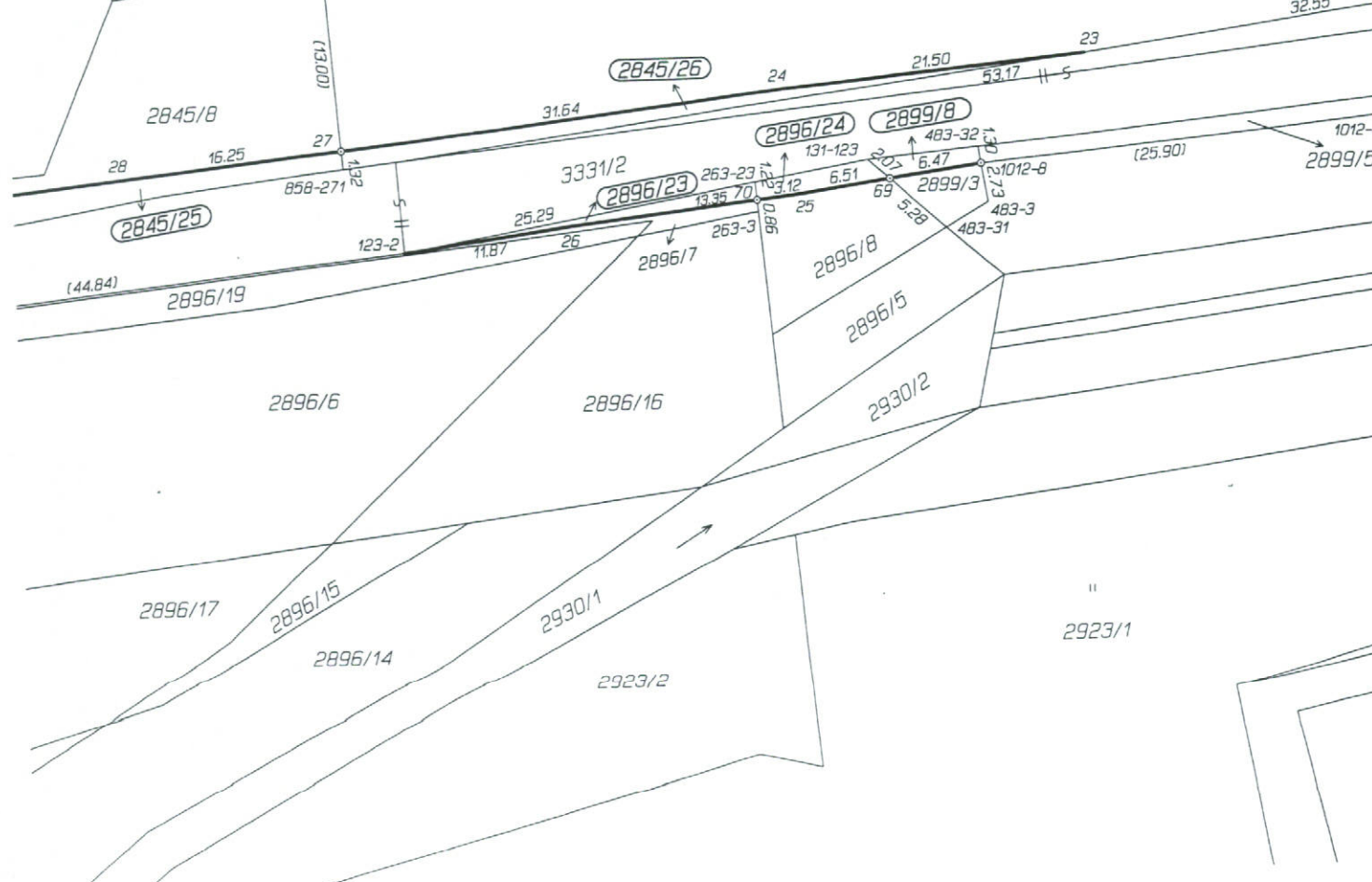
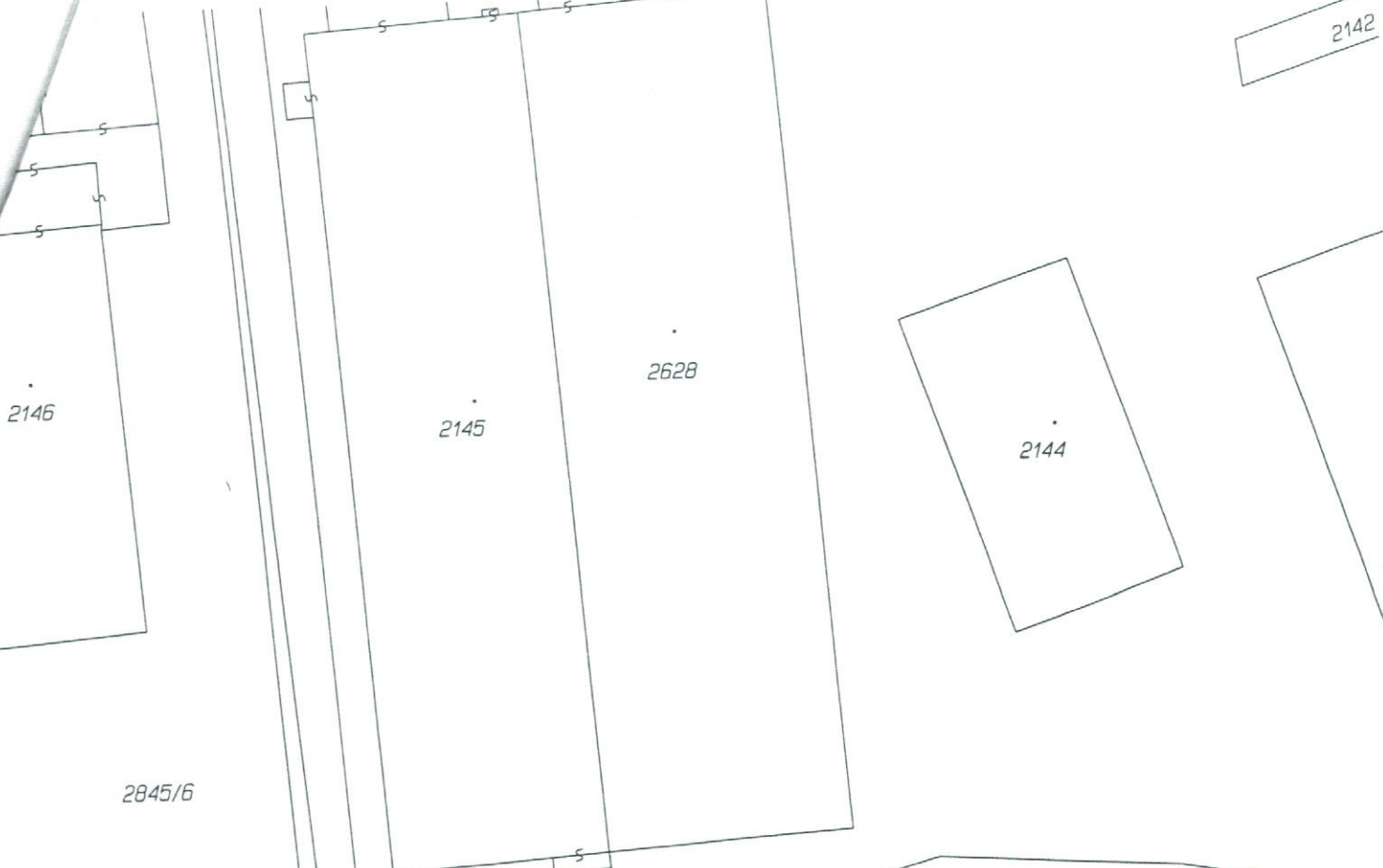
2896/14

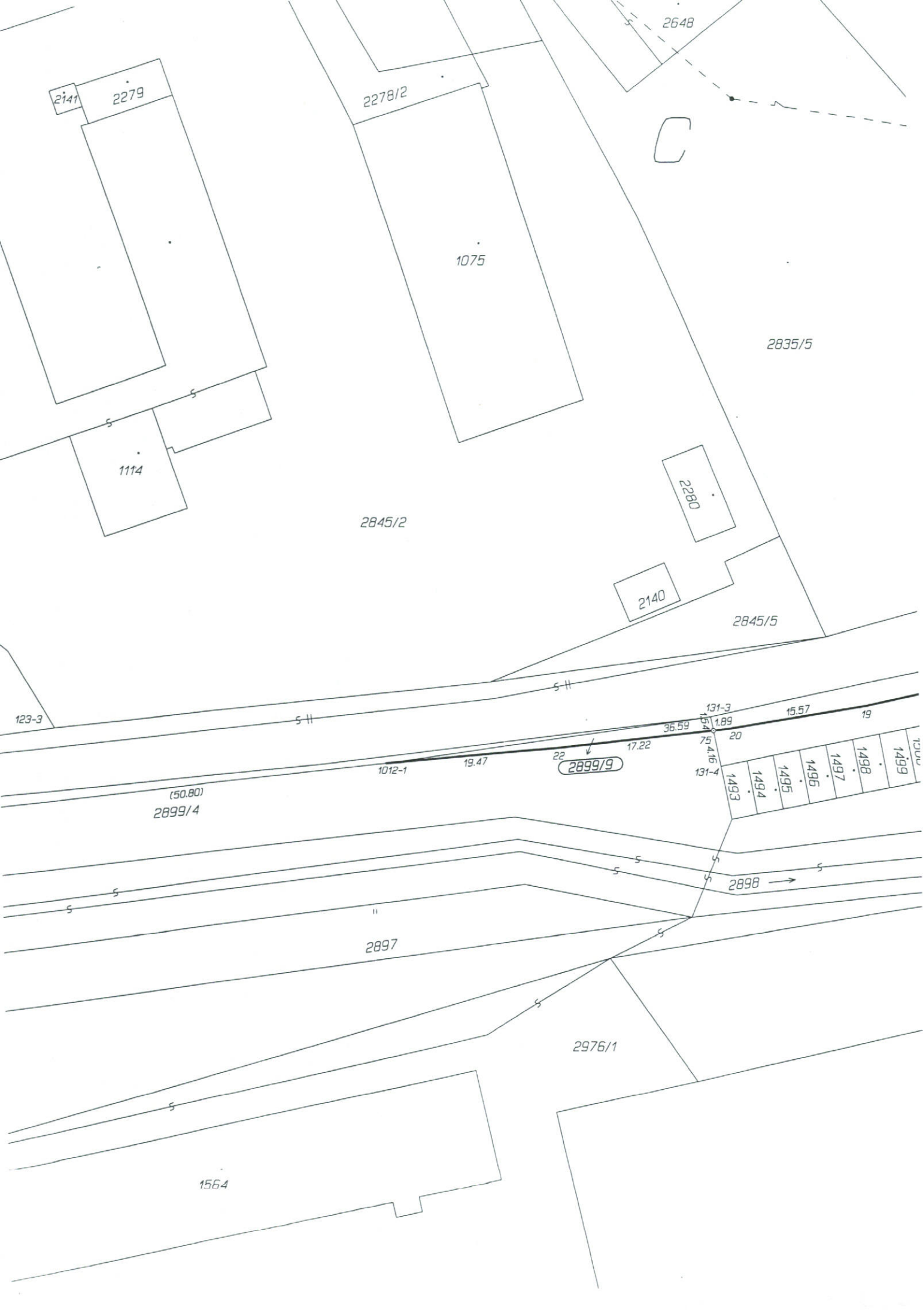
2896/9

2933/1

2896/10







2141 2279

2278/2

2648

C

1075

2835/5

1114

2845/2

2280

2140

2845/5

123-3

S II

S II

(50.80)
2899/4

1012-1

19.47

22
2899/9

17.22

131-3
1.89

15.57

19

75

20

4.16

131-4

1493

1494

1495

1496

1497

1498

1499

2898

2897

2976/1

1564